

Burden of Psoriasis in Women

This material was developed by dermatologists for dermatologists to highlight the unmet need for adequate treatment and management of women living with psoriasis. It intends to highlight data from key publications in the field, as well as providing expert advice and opinions from dermatologists.



Álvaro González Cantero



Annunziata Dattola



Elise Kleyn



María Magdalena Constantín



Nina Magnolo



Tom Hillary

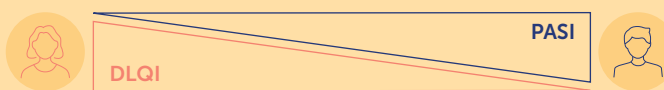
Increased awareness of gender differences in disease presentation, treatment expectations and treatment responses is needed for better personalisation of treatment plans.¹

“ Dermatologists play an important role. ”

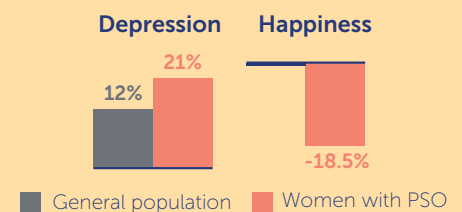
Key Literature on the Burden of Psoriasis in Female Patients

While the prevalence of PSO is similar between genders, gender differences exist in the presentation of symptoms, communication, and treatment outcomes.¹ Disease onset in women often overlaps with childbearing age.²

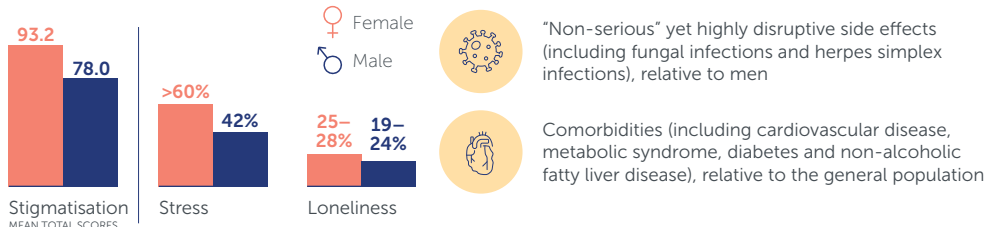
Women experience greater subjective disease burden than men, reporting worse quality of life (DLQI) despite lower objective disease measures (PASI)^{1,2}



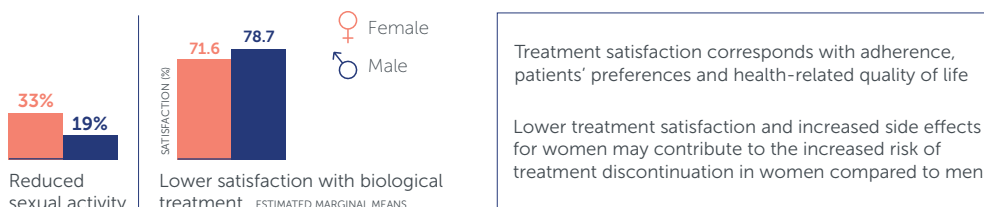
Women with psoriasis report higher levels of depression and lower happiness compared to the general population²



Women with psoriasis experience higher:¹⁻³



Women with psoriasis experience:^{1,2}



Clinical Considerations

It is important to consider the burden of psoriasis and the issues faced by female patients with psoriasis to enable optimal disease management²

“ Risk of not treating women optimally is higher if only objective scores are considered for treatment decision

Clinicians should be aware of the gender differences and increased burden of disease in female patients living with psoriasis
There is still more to learn regarding the management and treatment of female psoriasis patients

This material reflects the views and recommendations of the authors. This material was reviewed and sponsored by UCB. The authors received consulting fees from UCB for their contribution in the development of this material. The necessary permissions for use of images are in place.

1. van der Schoot LS, et al. J Eur Acad Dermatol Venereol. 2019;33(10):1913-1920; 2. Gottlieb AB, et al. Int J Womens Dermatol. 2019;5(3):141-150; 3. De Simone C, et al. G Ital Dermatol Venereol. 2020;155(4):434-440. DLQI: Dermatology Life Quality Index; PASI: Psoriasis Area and Severity Index; PSO: psoriasis.